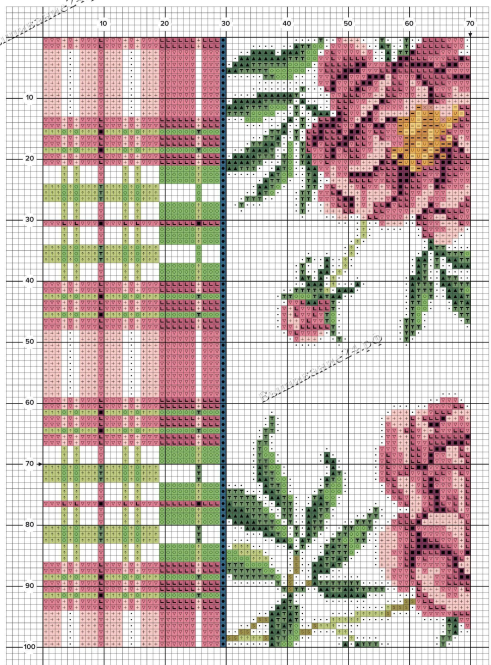
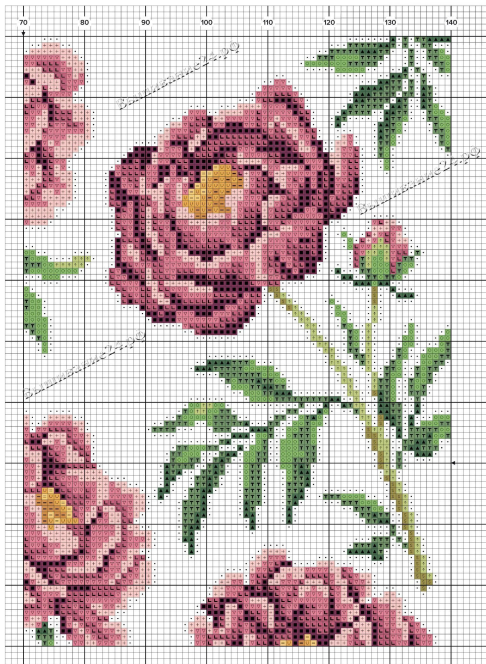
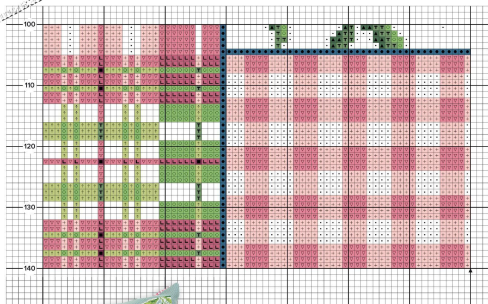




Скачать 24.00







Designed by: Maria Diaz Stitch count: 140 high x 140 wide
Design size: 26x26cm (10½x10½in) Stitch time: 40 hours

This design was stitched on 14 count aida fabric.

Materials

- DMC Misty Blue 14 count aida, 36x36cm (14x14in)
- Stranded cotton as listed in the key
- Size 24 tapestry needle
- Backing fabric; 36x36cm (14x14in)
- Cushion pad; 30x30cm (12x12in)

Materials available from www.willowfabrics.com

DMC			Anchor			Madeira		
Cross stitch in two strands								
↑ ↑	016	254	1308	■ ■	3731	076	506	
○ ○	704	256	1308	▽ ▽	3733	075	813	(2)
■ ■	733	280	1611	● ●	3842	162	1011	
× ×	758	868	403	◻ ◻	B5200	001	white	(2)
+ +	818	073	502	(2)	Half cross stitch in two strands			
▲ ▲	986	246	1404	U U	728	305	108	
T T	988	243	1402	— —	783	306	2211	
■ ■	3685	1028	602	= =	3822	295	2511	

(2) indicates more than one skein is required.

